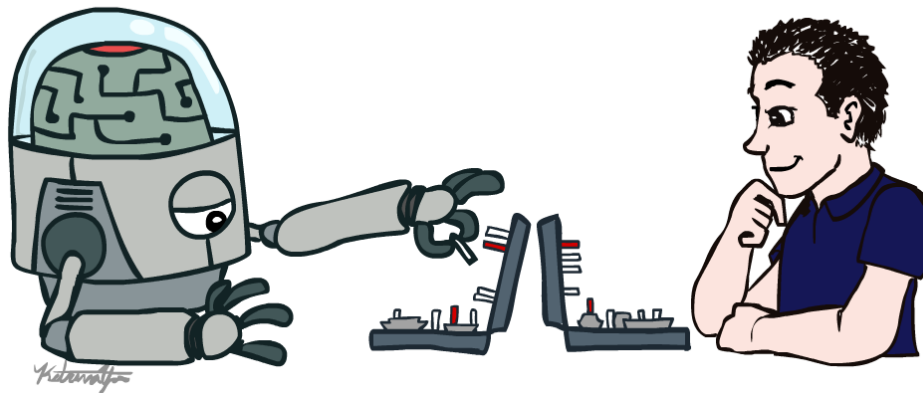


# COE 4213564

## Introduction to Artificial Intelligence Introduction

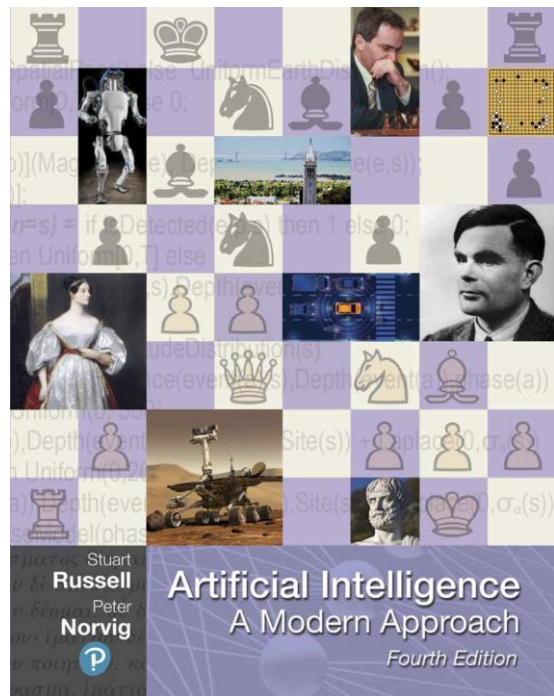


Fall 2024

Many slides are adapted from CS 188 (<http://ai.berkeley.edu>), CIS 521, CS 221 and other resources from web.

# Textbook

- Russell & Norvig, AI: A Modern Approach, 4<sup>th</sup> Ed.
- The textbook is 1000 pages long and covers core ideas that were developed as early as the 1950s.
- This is a brand-new edition of the classic textbook which adds sections on deep learning, natural language processing, causality, and fairness in AI.



# Grading

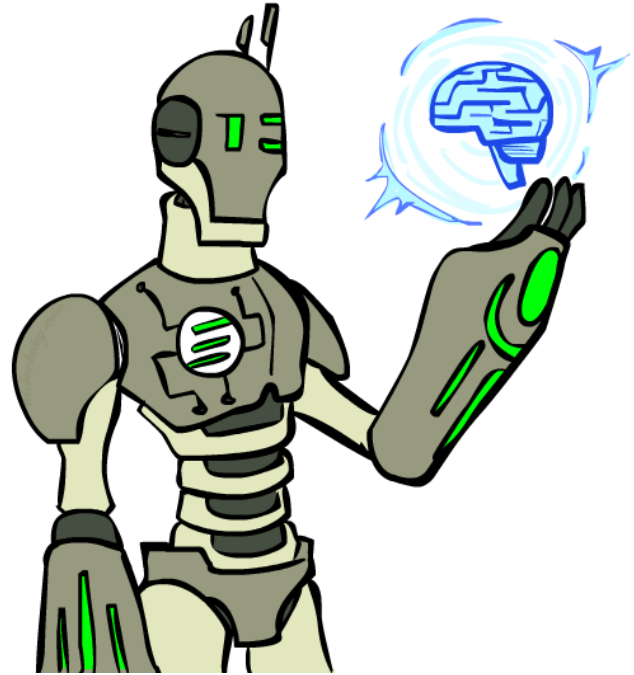
---

<b>Evaluation Tool</b>	<b>Weight in %</b>
Assignments, Presentations and Projects	30
In-term Exams	30
Final	40

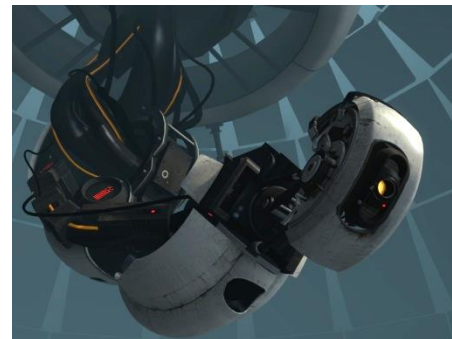
# Today

---

- What is artificial intelligence?
- What can AI do?
- What is this course?



# Sci-Fi AI?



# AI — in the news, on social media, everywhere



Microsoft creates AI that can read a document and answer questions about it as well as a person

January 15, 2018 | [Allison Linn](#)



Microsoft researchers achieve new conversational speech recognition milestone

August 20, 2017 | By [Xuedong](#)



June 24, 2014

## DeepFace: Closing Performance in Face Recognition

Conference on Computer Vision and Pattern Recognition (CVPR)

By: [Yaniv Taigman](#), [Ming Yang](#), [Marc'Aurelio Ranzato](#), [Lior Wolf](#)

### Abstract

In modern face recognition, the conventional pipeline co-classify. We revisit both the alignment step and the representation modeling in order to apply a piecewise affine transformation layer deep neural network. This deep network involves multiple locally connected layers without weight sharing, rather than a fully connected layer. We trained it on the largest facial dataset to-date, an identity dataset belonging to more than 4,000 identities.

If you think AI will never replace radiologists—you may want to think again

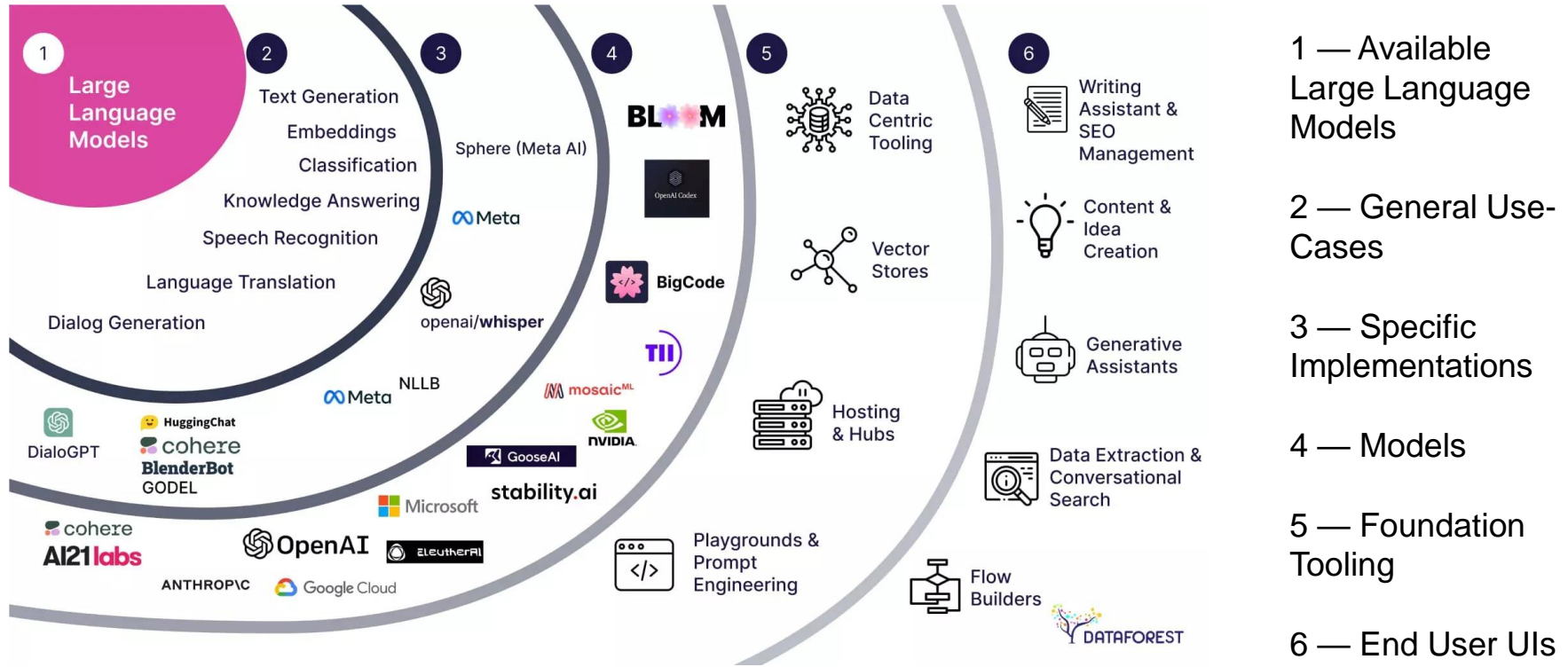
May 14, 2018 | [Michael Walter](#) | [Artificial Intelligence](#)



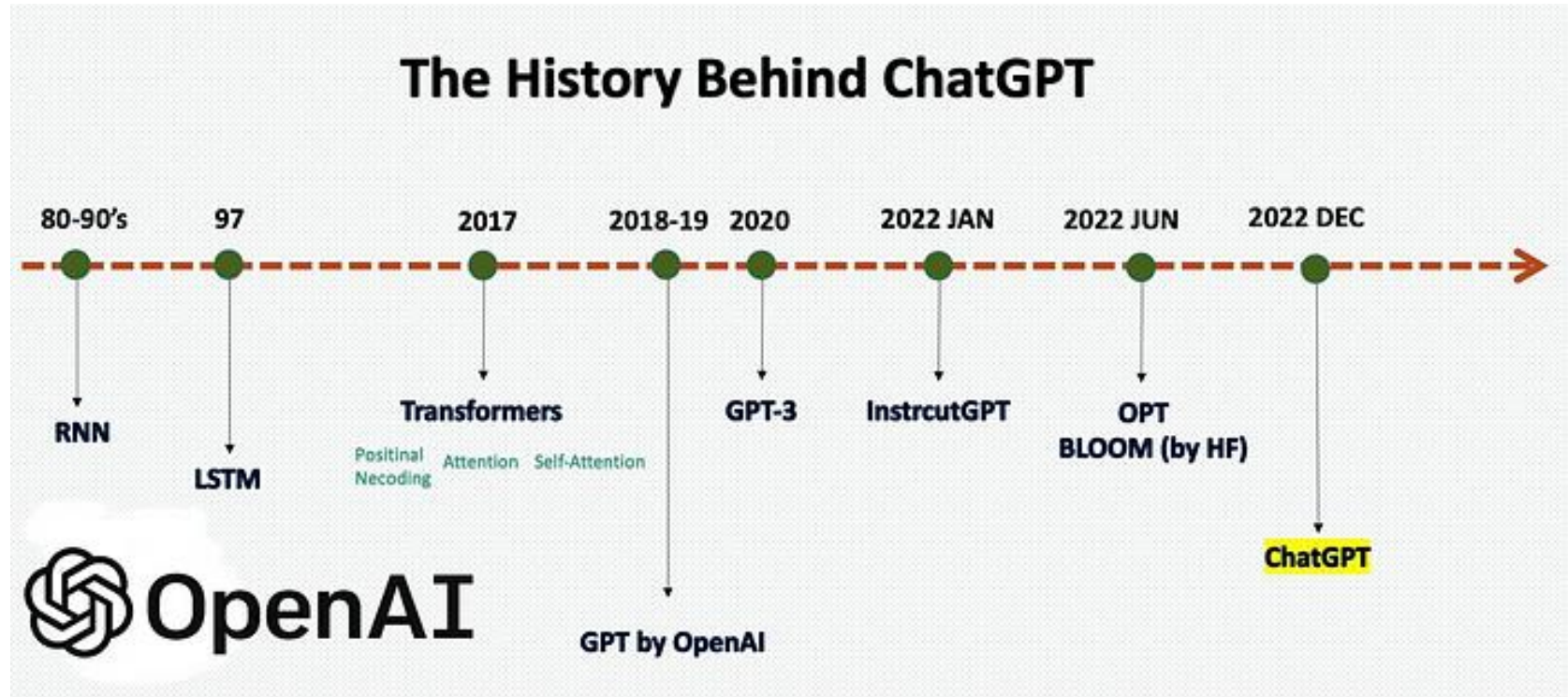
It's one of the most frequently discussed questions in radiology today: What kind of long-term impact will artificial intelligence (AI) have on radiologists?

Robert Schier, MD, a radiologist for RadNet, shared his own thoughts on the topic in a [new commentary](#) published by the *Journal of the American College of Radiology*—and he's not quite as optimistic as some of his colleagues throughout the industry.

# Large Language Models



# The Major History of NLP / LLM



# Speculation about the future:

The screenshot shows a portion of The Atlantic's website. At the top, the logo "The Atlantic" is on the left, and "SUBSCRIBE SEARCH MENU" is on the right. Below the logo, there are two main article teasers. The left one is titled "THE SEC... MACHINE" with a blue and white dot pattern background. The right one is titled "Elon M... It" with a white background and a photo of Elon Musk. Below these, there is a video player showing Stephen Hawking with a play button overlay. The video title is "Stephen Hawking warns artificial intelligence could end mankind". Below the video, there is a caption: "Stephen Hawking: 'Humans, who are limited by slow biological evolution, couldn't compete and would be superseded'". To the right of the video, there is a small image of a building with the caption "Gehry-Designed New York City Office".

Technology

## Stephen Hawking warns artificial intelligence could end mankind

By Rory Cellan-Jones  
Technology correspondent

2 December 2014 | Technology |

**THE SEC... MACHINE**

WORK. PR...  
IN A TIM...  
BRILLIAN...

ERIK BRYNJOLFSSON  
ANDREW MCAFEE

**Elon M... It**

"It's definitely..."

BY TESS T...

f t g+

Stephen Hawking: "Humans, who are limited by slow biological evolution, couldn't compete and would be superseded"

PHOTO: GETTY IMAGES

THE ADVANCES WE...  
humanoid robots, speech recognition and sy...  
Jeopardy!-champion computers—are not the

ELON MUSK HAS EMERGED AS A LEADING VOICE IN SPEAKING OUT ON THE POTENTIAL DANGERS OF...  
artificial intelligence, going so far as to call it the "biggest existential threat" to

HIT THE ROAD

GEHRY-DESIGNED NEW YORK CITY OFFICE

CS221 / Spring 2019 / Charikar & Sadigh

- it will bring about sweeping societal change due to automation, resulting in massive job loss, not unlike the industrial revolution, or that AI could even surpass human-level intelligence and seek to take control.

# Companies

---



"An important shift from a mobile first world to an AI first world" [CEO Sundar Pichai @ Google I/O 2017]



Created AI and Research group as 4th engineering division, now 8K people [2016]



Created Facebook AI Research, Mark Zuckerberg very optimistic and invested

**Others:** IBM, Amazon, Apple, Uber, Salesforce, Baidu, Tencent, etc.

# Governments

---



"AI holds the potential to be a major driver of economic growth and social progress" [White House report, 2016]



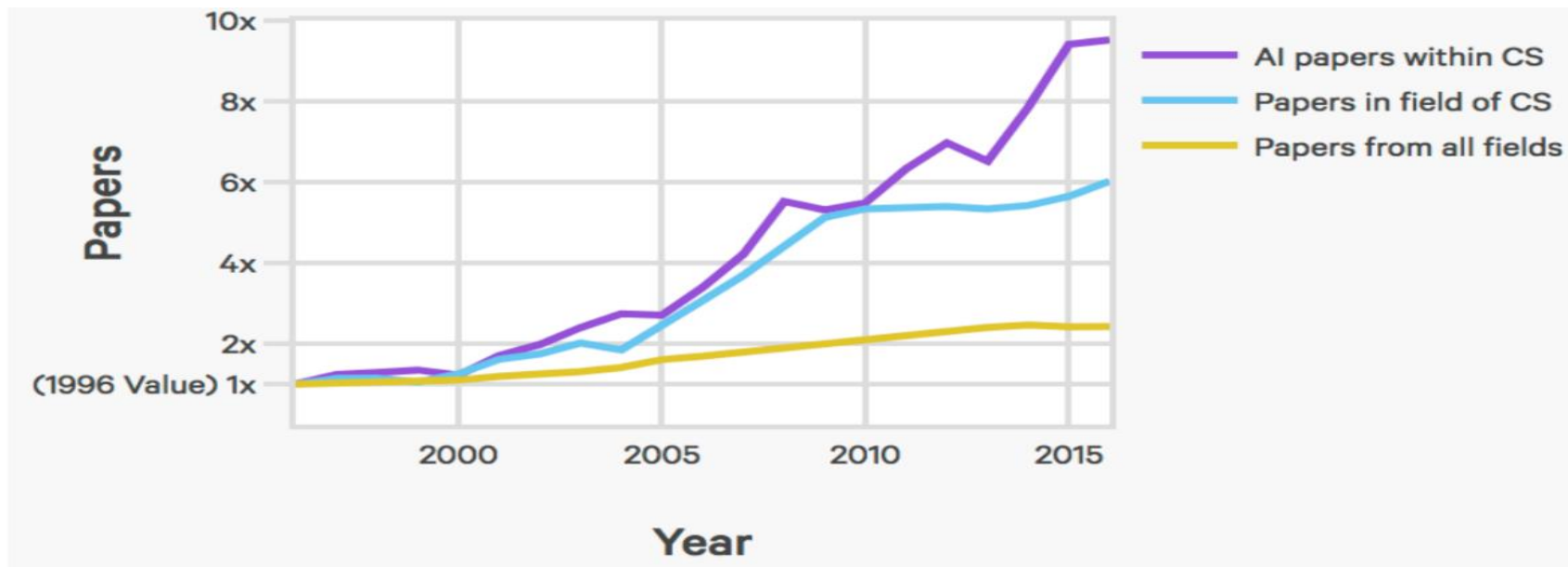
Released domestic strategic plan to become world leader in AI by 2030 [2017]



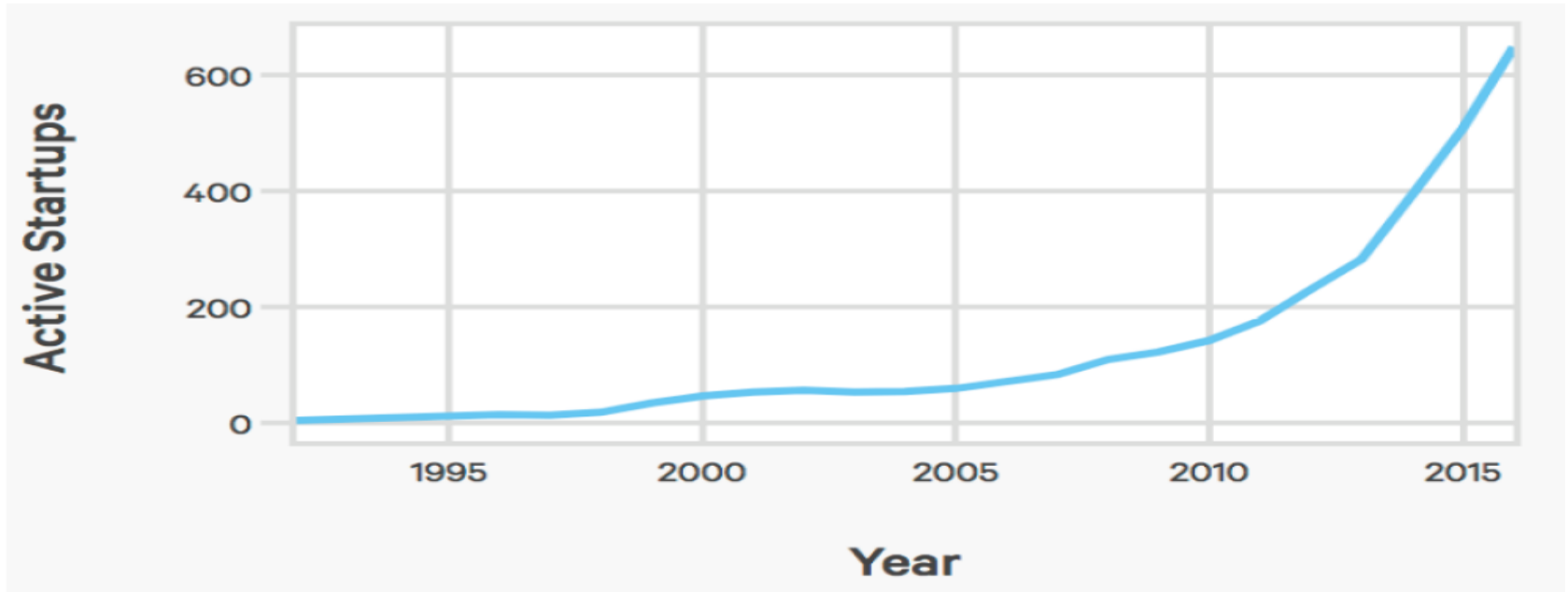
"Whoever becomes the leader in this sphere [AI] will become the ruler of the world" [Putin, 2017]

- While media hype is real, it is true that both companies and governments are heavily investing in AI. Both see AI as an integral part of their competitive strategy

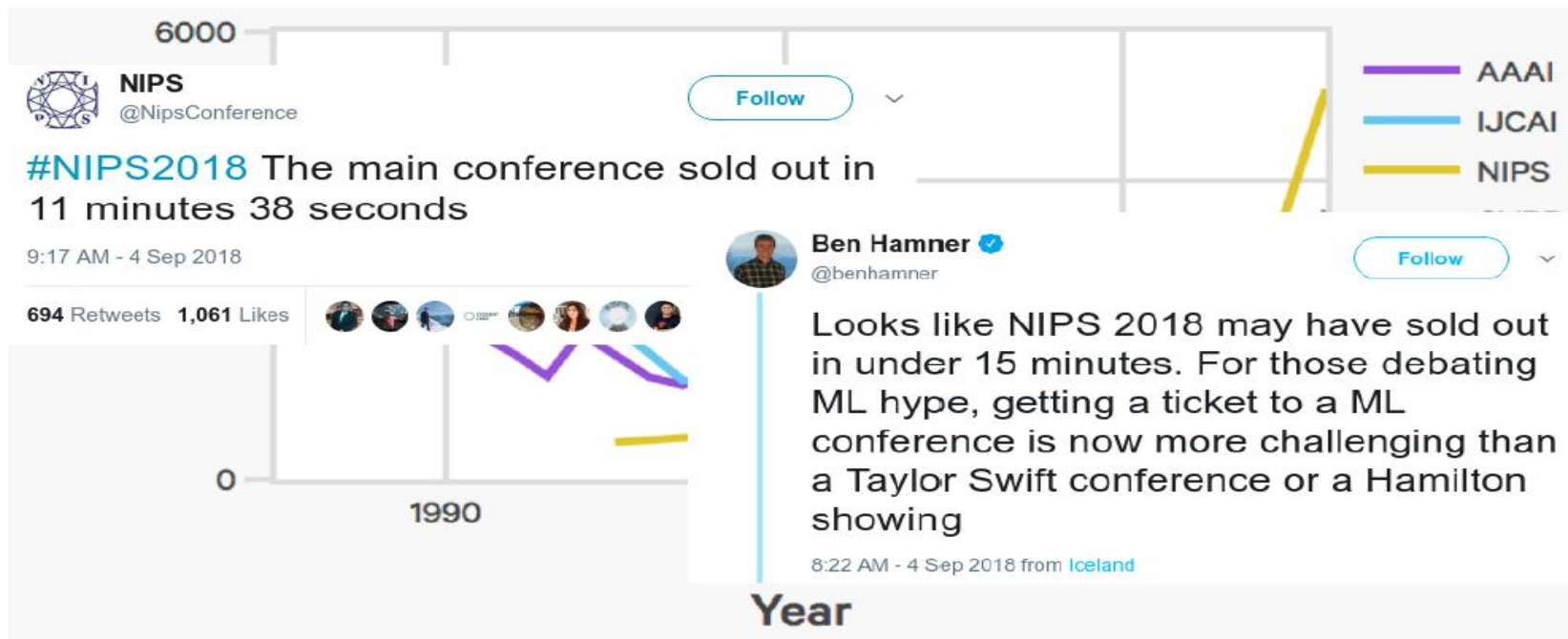
# AI index: number of published AI papers



# AI index: number of AI startups



# AI index: AI conference attendance

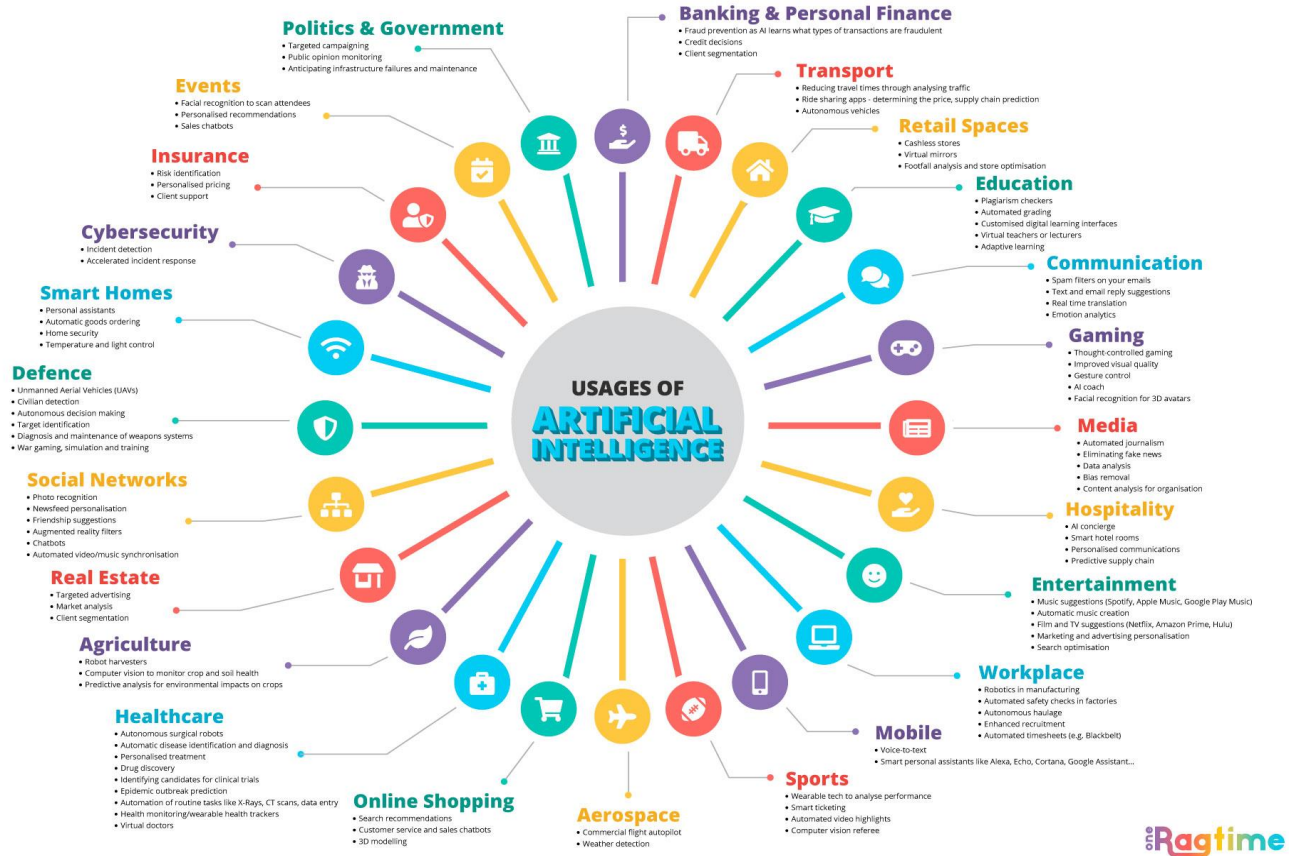


# Turing Award 2018

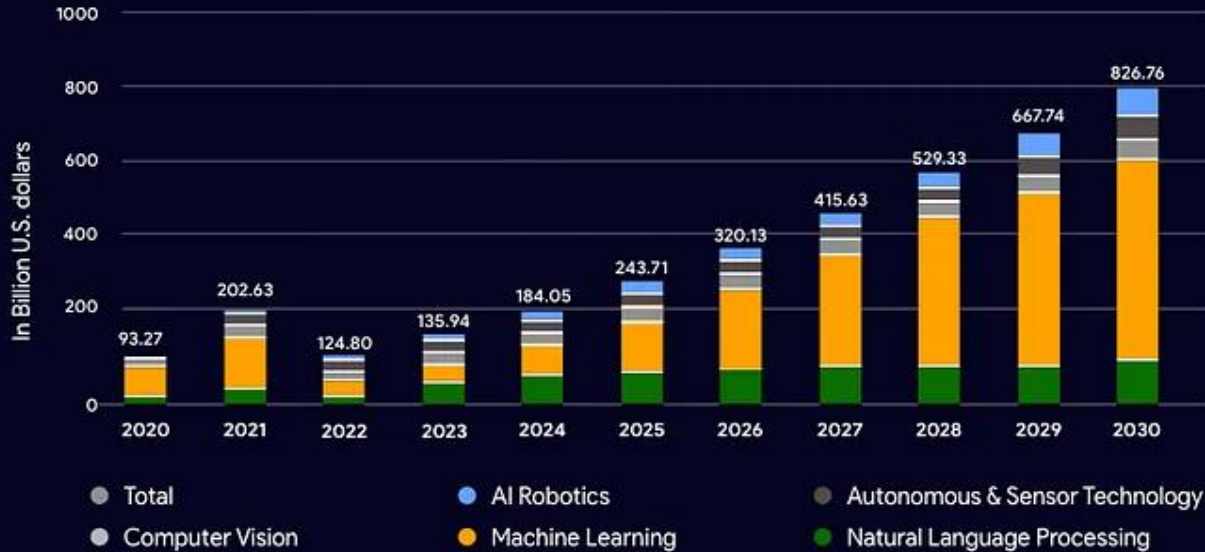
'Godfathers of AI' honored with Turing Award, the Nobel Prize of computing.



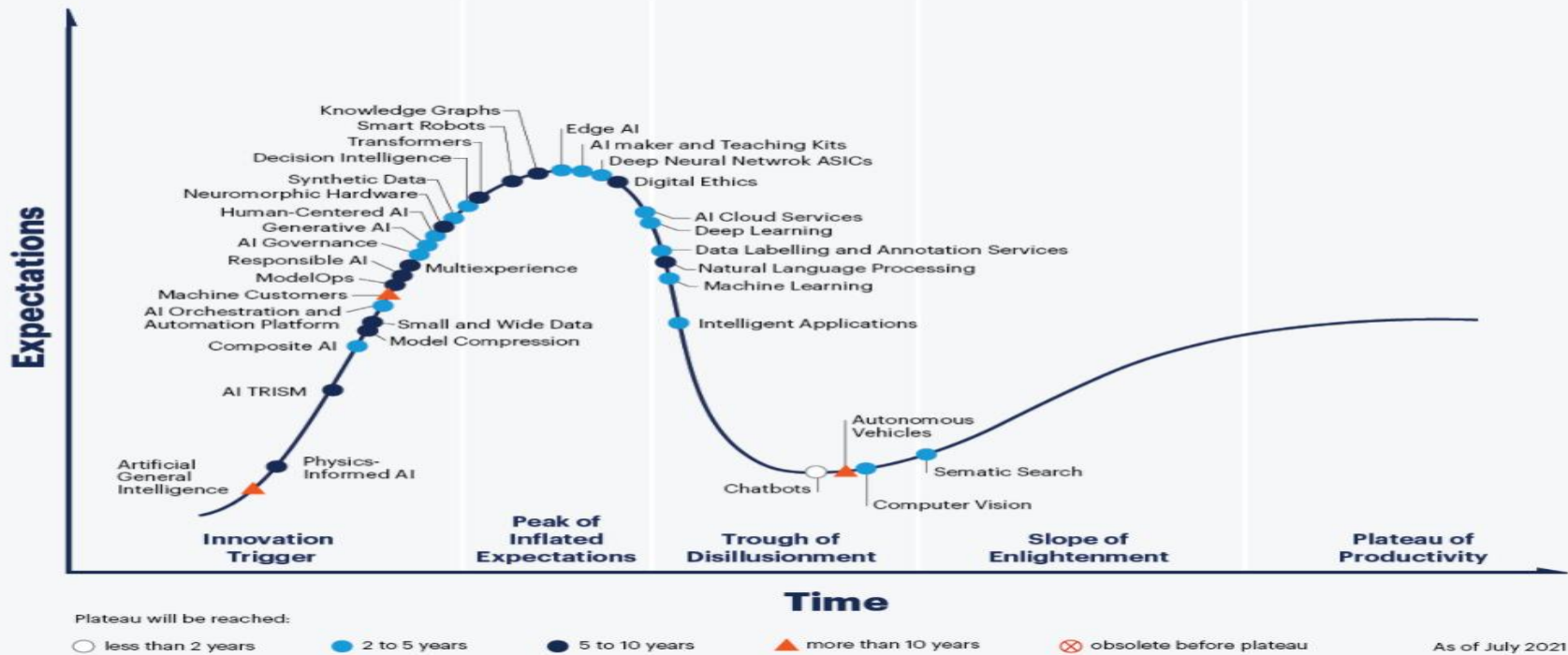
From left to right: Yann LeCun | Photo: Facebook; Geoffrey Hinton | Photo: Google; Yoshua Bengio | Photo: Botler AI  
CS221 / Spring 2019 / Charikar & Sadigh



## Artificial Intelligence Market Size, 2024 to 2030 ( In USA Billion )



# Gartner Hype Cycle for AI 2021



The reality is that there is a lot of uncertainty over what will happen, and there is a lot of nuance that's missing from these stories about what AI is truly capable of. (CS221)

# Two views of AI



AI agents: how can we re-create intelligence?



AI tools: how can we benefit society?

- There are two ways to look at AI philosophically.
  - The first is what one would normally associate with the AI: the science and engineering of building "intelligent" agents. The inspiration of what constitutes intelligence comes from the types of capabilities that humans possess: the ability to perceive a very complex world and make enough sense of it to be able to manipulate it.
  - The second views AI as a set of tools. We are simply trying to solve problems in the world, and AI techniques happen to be quite useful for that.
- However, both views boil down to many of the same day-to-day activities (e.g., collecting data and optimizing a training objective), the philosophical differences do change the way AI researchers approach and talk about their work. And moreover, the conation of these two can generate a lot of confusion. (Ref: CS221)

# An intelligent agent

Perception

Robotics

Language



Knowledge

Reasoning

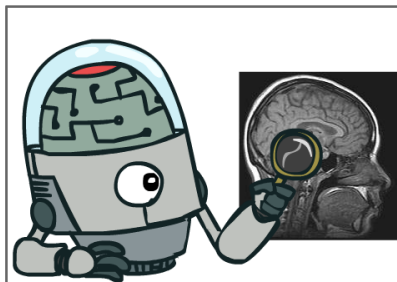
Learning

- The starting point for the agent-based view is ourselves.
- As humans, we have to be able to perceive the world (computer vision), perform actions in it (robotics), and communicate with other agents.
- We also have knowledge about the world (from how to ride a bike to knowing the capital of France), and using this knowledge we can draw inferences and make decisions.
- Finally, we learn and adapt over time. Indeed **machine learning** has become **the primary driver** of many of the AI applications we see today.

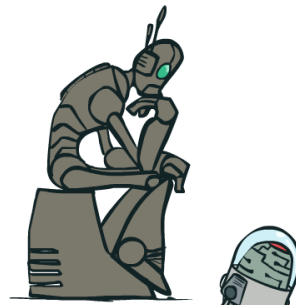
# What is AI?

The science of making machines that:

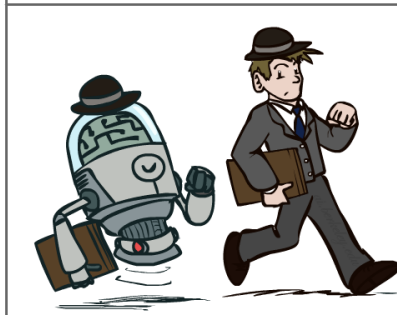
Think like people



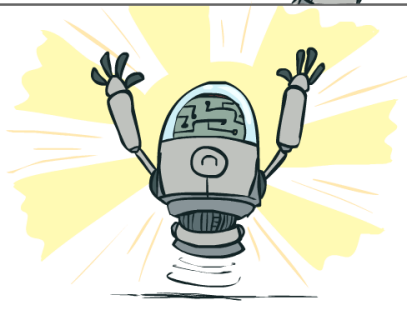
Think rationally



Act like people



Act rationally



# Rational-agent Approach in AI

- AI has focused on the study and construction of agents that do the right thing. What counts as **the right thing is defined by the objective** that we provide to the agent. This general paradigm is so pervasive that we might call it the standard model.
- A rationalist **approach involves** a combination of **mathematics** and **engineering**, and connects to **statistics**, **control theory**, and **economics**.
- It prevails not only in AI, but also in control theory, where a controller **minimizes a cost function**; in operations research, where **a policy maximizes a sum of rewards**; in statistics, where a decision rule **minimizes a loss function**; and in economics, where a decision maker **maximizes utility or some measure of social welfare**.
- We need to make one important refinement to the standard model to account for the fact that **perfect rationality**—always taking the exactly optimal action—is not feasible in complex environments. So, we have **a limited rationality**.
- However, **perfect rationality** often remains a good starting point for theoretical analysis.

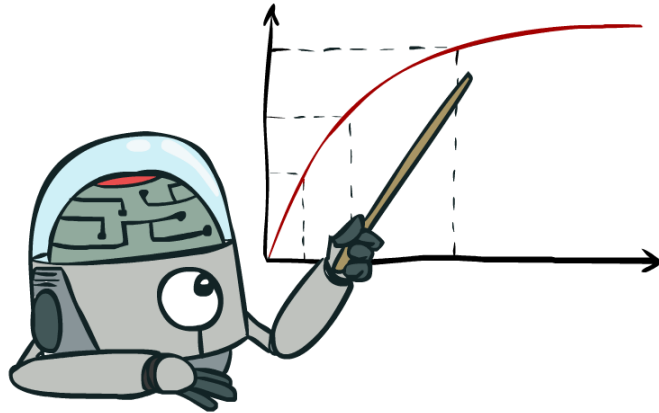
# Rational Decisions

---

We'll use the term **rational** in a very specific, technical way:

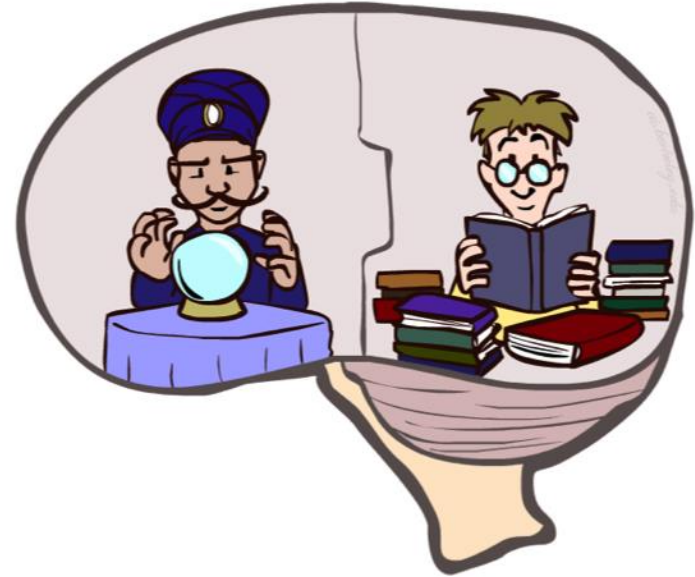
- Rational: maximally achieving pre-defined goals
- Rationality only concerns what decisions are made  
(not the thought process behind them)
- Goals are expressed in terms of the **utility** of outcomes
- Being rational means **maximizing your expected utility**

# Maximize Your Expected Utility



# What About the Brain?

- Brains (human minds) are very good at making rational decisions, but not perfect
- Brains aren't as modular as software, so hard to reverse engineer!
- “Brains are to intelligence as wings are to flight”
- Lessons learned from the brain: memory and simulation are key to decision making



# AI Tools

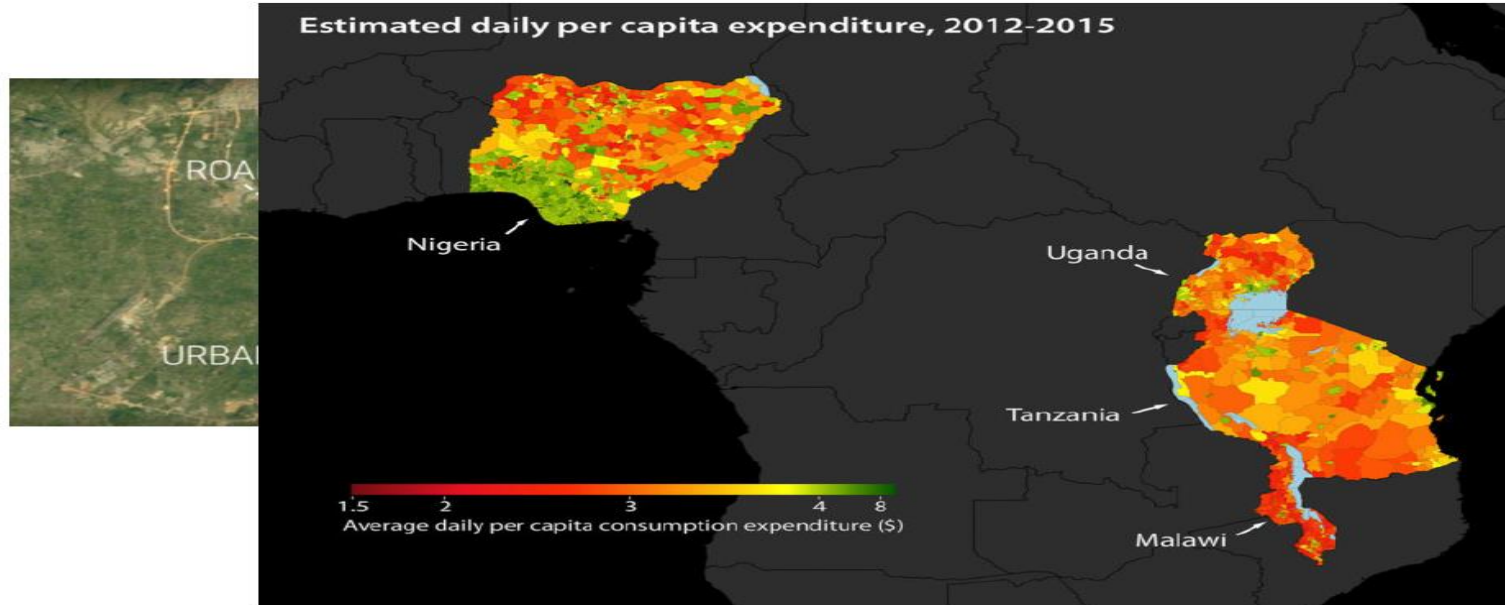
---



*AI | tools...*

- The AI agents view is an inspiring quest to uncover the mysteries of intelligence and tackle the tasks that humans are good at. While there has been a lot of progress, we still have a long way to go along some dimensions: for example, the ability to learn quickly from few examples or the ability to perform commonsense reasoning.
- At the same time, the current level of technology is already being deployed widely in practice. These settings are often not particularly human-like (targeted advertising, news or product recommendation, web search, supply chain management, etc.)

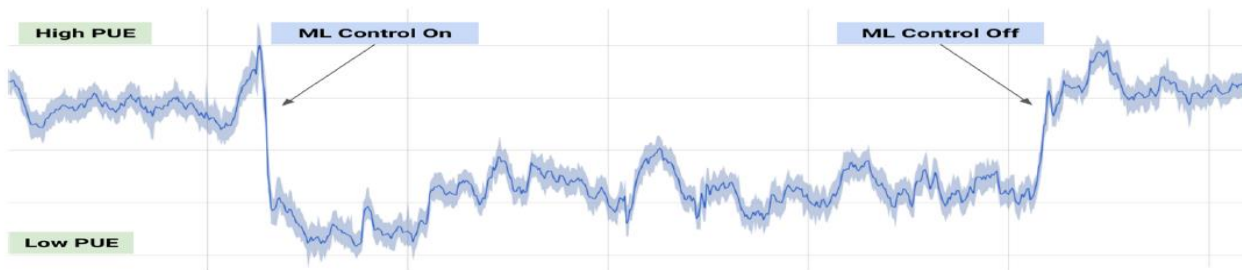
# Predicting poverty



- The computer vision techniques, used to recognize objects, can also be used to tackle social problems. Poverty is a huge problem, and even identifying the areas of need is difficult due to the difficulty in getting reliable survey data. Recent work has shown that one can take satellite images (which are readily available) and predict various poverty indicators.

# Saving energy by cooling datacenters

## Saving energy by cooling datacenters

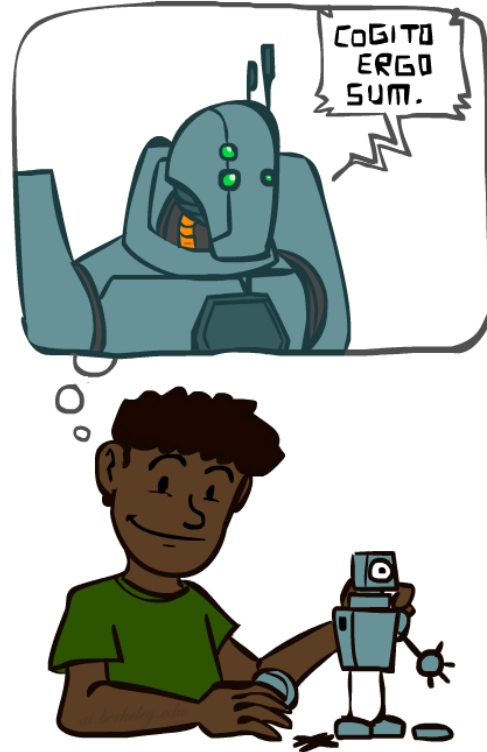


CS221 / Spring 2019 / Charikar & Sadigh

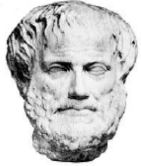
- Machine learning can also be used to optimize the energy efficiency of datacenters, which given the hunger for compute these days makes a big difference. Some recent work from DeepMind shows how to significantly reduce Google's energy footprint by using machine learning to predict the power usage effectiveness from sensor measurements such as pump speeds, and using that to drive recommendations.

# A (Short) History of AI

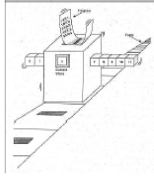
---



# Pre-AI developments



Philosophy: **intelligence** can be achieved via mechanical computation (e.g., Aristotle)



Church-Turing thesis (1930s): any computable function is **computable** by a Turing machine



Real computers (1940s): actual **hardware** to do it: Heath Robinson, Z-3, ABC/ENIAC

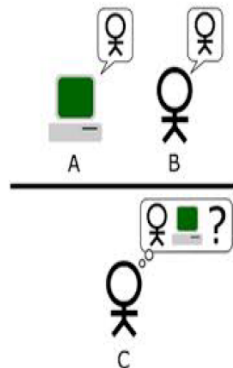
- While AI is a relatively young field, one can **trace back some of its roots back to Aristotle**, who formulated a system of syllogisms that capture the reasoning process: how one can mechanically apply syllogisms to derive new conclusions.
- **Alan Turing**, who laid the conceptual foundations of computer science, **developed the Turing machine, an abstract model of computation**, which, based on the Church-Turing thesis, can implement any computable function.
- In the 1940s, devices that could actually carry out these computations started emerging.
- So perhaps one might be able to **capture intelligent behavior via a computer**. But how do we define success?

Syllogism, in logic, a valid deductive argument having two premises and a conclusion

# The Turing Test (1950)

[Turing, 1950. Computing Machinery and Intelligence]

"Can machines think?"



Q: Please write me a sonnet on the subject of the Forth Bridge.

A: Count me out on this one. I never could write poetry.

Q: Add 34957 to 70764.

A: (Pause about 30 seconds and then give as answer) 105621.

**Tests behavior — simple and objective**

- **Can machines think?** This is a question that has occupied philosophers since Descartes. But even the denitions of "thinking" and "machine" are not clear. **Alan Turing**, the renowned mathematician and code breaker who laid the foundations of computing, **posed a simple test** to sidestep these philosophical concerns.
- In the test, **an interrogator converses with a man and a machine via a text-based channel**. If the interrogator **fails to guess which one is the machine**, then the machine is said to have passed the Turing test. (This is a simplication but it success for our present purposes.)
- Although the Turing test is not without flaws (e.g., failure to capture visual and physical abilities, **emphasis on deception**), **the beauty of the Turing test is its simplicity and objectivity**. It is only a test of behavior, not of the internals of the machine. It doesn't care whether the machine is using logical methods or neural networks. This decoupling of what to solve from how to solve is an important theme in this class.

## Birth of AI (1956)

- AI's official birth: Dartmouth conference , 1956

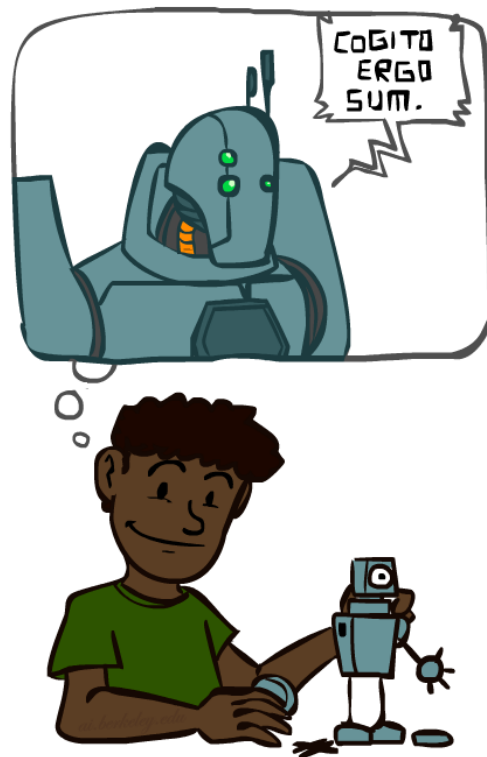


“An attempt will be made to find how to make machines use language, form abstractions and concepts, solve kinds of problems now reserved for humans, and improve themselves. ***We think that a significant advance can be made if we work on it together for a summer.***”

**John McCarthy and Claude Shannon  
Dartmouth Workshop Proposal**

# A (Short) History of AI

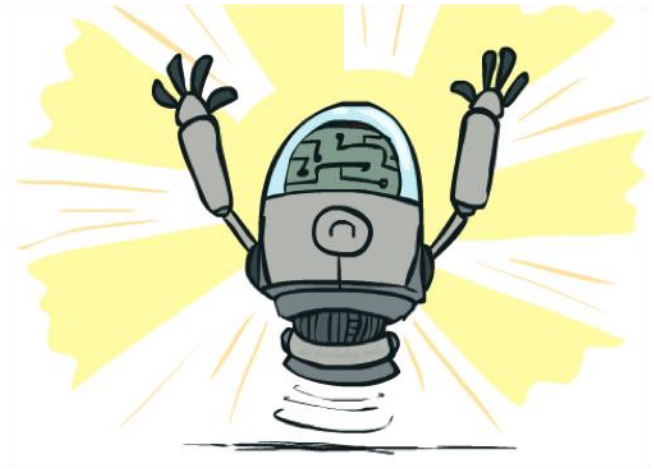
- **1940-1950: Early days**
  - 1943: McCulloch & Pitts: Boolean circuit model of brain
  - 1950: Turing's "Computing Machinery and Intelligence"
- **1950—70: Excitement: Look, Ma, no hands!**
  - 1950s: Early AI programs, including Samuel's checkers program, Newell & Simon's Logic Theorist, Gelernter's Geometry Engine
  - 1956: Dartmouth meeting: "Artificial Intelligence" adopted
  - 1965: Robinson's complete algorithm for logical reasoning
- **1970—90: Knowledge-based approaches**
  - 1969—79: Early development of knowledge-based systems
  - 1980—88: Expert systems industry booms
  - 1988—93: Expert systems industry busts: "AI Winter"
- **1990—: Statistical approaches**
  - Resurgence of probability, focus on uncertainty
  - General increase in technical depth
  - Agents and learning systems... "AI Spring"?
- **2000—: Where are we now?**



# What Can AI Do?

Quiz: Which of the following can be done at present?

- ✓ Play a decent game of table tennis?
- ✓ Play a decent game of Jeopardy?
- ✓ Drive safely along a curving mountain road?
- ? Drive safely along Telegraph Avenue?
- ✓ Buy a week's worth of groceries on the web?
- ✗ Buy a week's worth of groceries at Berkeley Bowl?
- ? Discover and prove a new mathematical theorem?
- ✗ Converse successfully with another person for an hour?
- ? Perform a surgical operation?
- ✓ Put away the dishes and fold the laundry?
- ✓ Translate spoken Chinese into spoken English in real time?
- ✗ Write an intentionally funny story?



[Shank, Tale-Spin System, 1984]

TALE-SPIN, AN INTERACTIVE PROGRAM  
THAT WRITES STORIES

James R. Meehan

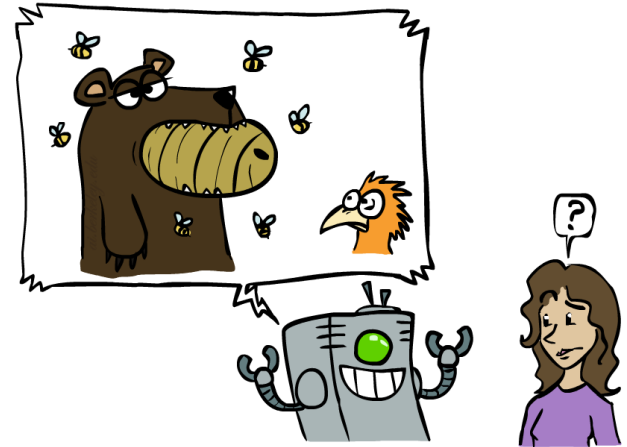
Dept. of Information and Computer Science  
University of California, Irvine  
Irvine, California 92717

ABSTRACT

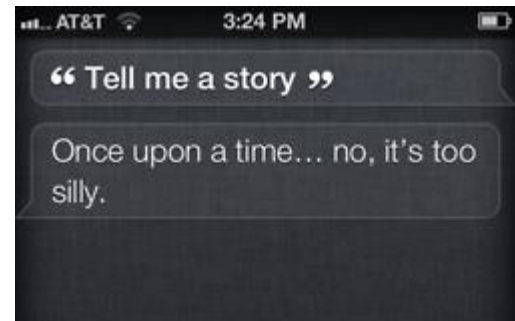
TALE-SPIN is a program that writes stories by using knowledge about problem solving, physical space, interpersonal relationships, character traits, bodily needs, story structure, and English. For these diverse sources of knowledge, it uses forms of representation which are themselves diverse, and it integrates them to produce the stories. The user may choose some of the initial setting and answer questions during the creation of the story, or he can choose from a list of "morals" such as "Never trust flatterers" and the program will decide what the initial setting must be in order to be able to write a story with that moral. The particular world within the story is not fixed; new characters and objects are introduced as needed.

# Unintentionally Funny Stories

- One day Joe Bear was hungry. He asked his friend Irving Bird where some honey was. Irving told him there was a beehive in the oak tree. Joe walked to the oak tree. He ate the beehive. The End.
- Henry Squirrel was thirsty. He walked over to the river bank where his good friend Bill Bird was sitting. Henry slipped and fell in the river. Gravity drowned. The End.
- Once upon a time there was a dishonest fox and a vain crow. One day the crow was sitting in his tree, holding a piece of cheese in his mouth. He noticed that he was holding the piece of cheese. He became hungry, and swallowed the cheese. The fox walked over to the crow. The End.



[Shank, Tale-Spin System, 1984]



# Intentionally Funny Jokes

---

Petrovic and Matthews – 2013 “Unsupervised joke generation from big data”

- *I like my X like I like my Y, Z.*
- Examples:
  - *I like my relationships like I like my source, open*
  - *I like my coffee like I like **my** war, cold*
  - *I like my boys like I like my sectors, bad*
- Human Jokes funny 33% of time
- Computer jokes funny 16% of time

# Logic

- Logical systems
  - Theorem provers
  - NASA fault diagnosis
  - Question answering
- Methods:
  - Deduction systems
  - Constraint satisfaction
  - Satisfiability solvers (huge advances!)



Image from Bart Selman

# Logic Theorist

---

- Program to perform mathematical proofs, Newell and Simon, 1955-1956
- Proved 38 of the first 52 theorems in Principia Mathematica
- Logic Theorist introduced several central AI concepts
  - Reasoning as search: consider exponential expansion of possible steps
  - Heuristics: rules of thumb to prune search tree
  - List processing: led eventually to development of Lisp
- Followed up by work on General Problem Solver

# Boom and Bust

---

- Early successes

- computers were winning at checkers
- solving word problems in algebra
- proving logical theorems

- Great promises

-... within ten years a digital computer will be the world's chess champion.  
Herbert Simon and Allen Newell, 1958

-In from three to eight years we will have a machine with the general intelligence of an average human being. Marvin Minsky, 1970

- Late 1970s: AI Winter, funding stopped

# Expert Systems (Early 1980s)

---

- Idea
  - – focus on a specific subject
  - – consult with an expert to write down all facts and rules
  - – build a computational system that applies rules to test cases
- Example: Medical Diagnosis
  - – Collect set of symptoms, diseases, and elements of treatment plans
  - – Write rules that predict further testing steps
  - – Write rules that predict disease
  - – Define treatment plan from template, given state and severity of disease
- Not very successful
  - – hard to formalize all aspects of expert knowledge
  - – systems get quickly too complex to manage (From Philipp Koehn Artificial Intelligence)

# Encoding Commonsense Knowledge

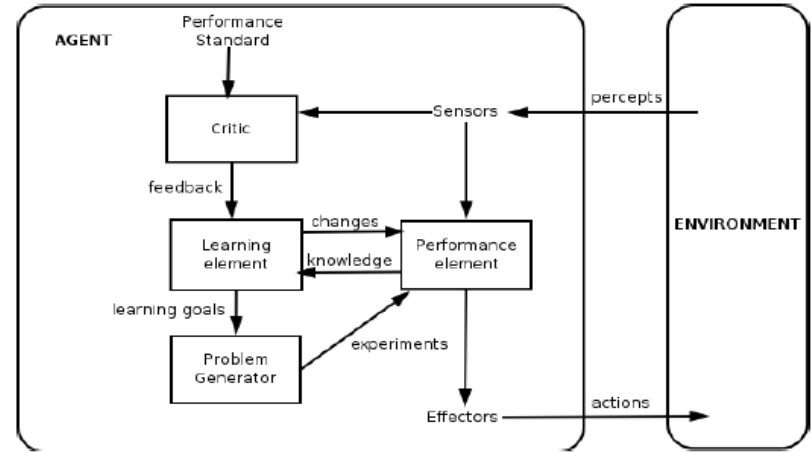
---

- For instance: Cyc project, started in 1986 (available as OpenCyc)
- Encode facts about the world
  - Barack Obama is a US President  
(#\$isa #\$BarackObama #\$UnitedStatesPresident)
  - all trees are plants  
(#\$genls #\$Tree-ThePlant #\$Plant)
- Inference engine that can answer queries
- Challenges: uncertainty, interface to natural language

(From Philipp Koehn Artificial Intelligence)

# Intelligent Agents (since late 1980s)

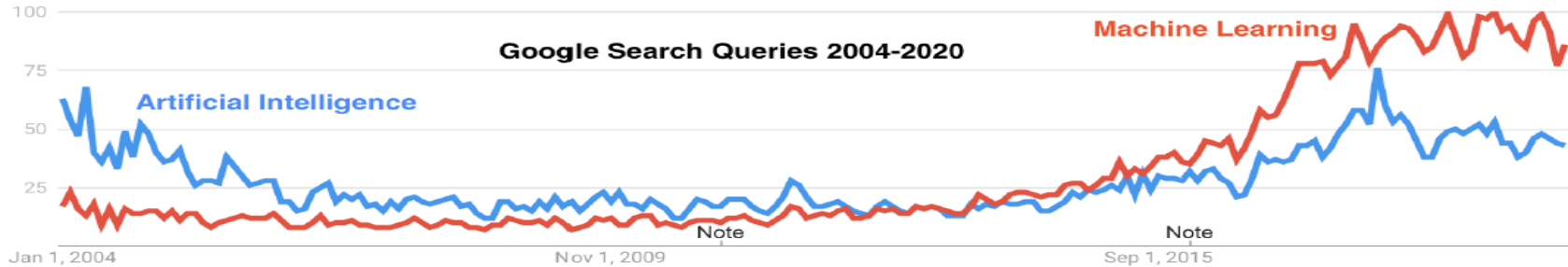
- Formal definition of intelligent agent (inspired by rational agent in economics)
  - perceives the environment
  - may have a model of the environment
  - has goals or a utility function
  - decides on an action
  - changes environment
  - may learn from environment



- Inclusion of uncertainty and probabilistic inference
- Requirement of empirical validation

⇒ AI a more rigorous "scientific" discipline

# Machine Learning (since 1990s)



- Idea
  - collect data, maybe annotate data
  - learn patterns automatically
- Many approaches
  - is the truth known? maybe delayed? partially?
  - are we predicting a class or complex structure?
  - is the input/output continuous or discrete?
  - how much of the structure of the problem is known and can be used?
- Dominant paradigm in language and speech processing and many other fields

# Big Data (since 2000s)

---

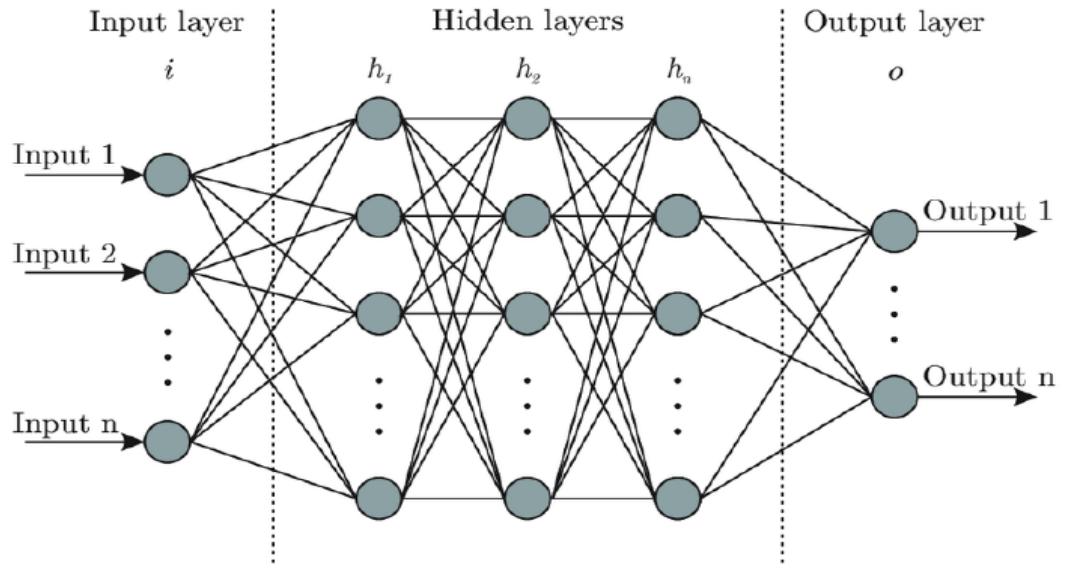
- Computers have become bigger
- Vast amounts of stored data available (e.g., the Internet)
- Better sensor systems allow collection of rich information about the environment

⇒ AI is big business



# Deep Learning (since 2010s)

- Rediscovery of neural networks
  - initially proposed in the 1960s
  - very popular in 1980s / early 1990s (“connectionism”)
- Why now? Better hardware
  - typically run on GPUs
  - 5000+ compute cores per processor
- Many toolkits available (Tensorflow, pyTorch, ...)

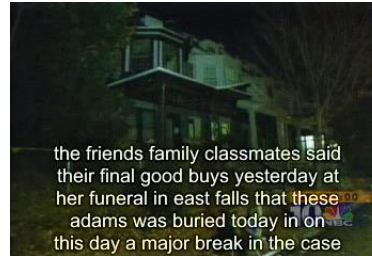


---

# Success Stories

# Natural Language

- Speech technologies (e.g. Siri)
  - Automatic speech recognition (ASR)
  - Text-to-speech synthesis (TTS)
  - Dialog systems
- Language processing technologies
  - Question answering
  - Machine translation



**"Il est impossible aux journalistes de rentrer dans les régions tibétaines"**

Bruno Philip, correspondant du "Monde" en Chine, estime que les journalistes de l'AFP qui ont été expulsés de la province tibétaine du Qinghai "n'étaient pas dans l'illégalité".



**Les faits** Le dalaï-lama dénonce l'"enfer" imposé au Tibet depuis sa fuite, en 1959  
**Vidéo** Anniversaire de la rébellion

**"It is impossible for journalists to enter Tibetan areas"**

Philip Bruno, correspondent for "World" in China, said that journalists of the AFP who have been deported from the Tibetan province of Qinghai "were not illegal."

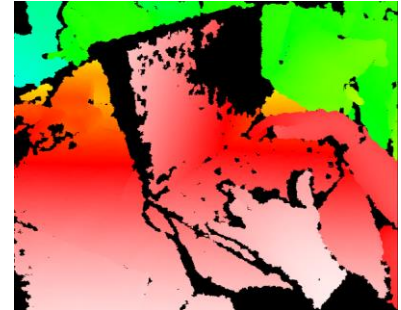
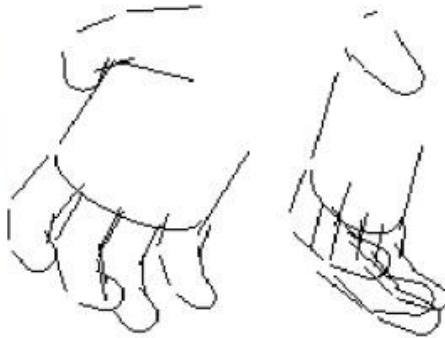
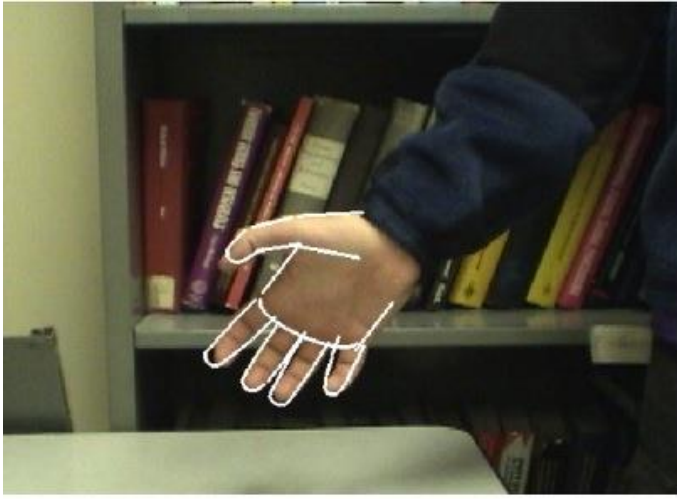


**Facts** The Dalai Lama denounces the "hell" imposed since he fled Tibet in 1959  
**Video** Anniversary of the Tibetan rebellion: China on guard

- Web search
- Text classification, spam filtering, etc...

# Vision (Perception)

- Object and face recognition
- Scene segmentation
- Image classification



Images from Erik Sudderth (left), wikipedia (right)

Demo1: VISION – lec\_1\_t2\_video.flv

Demo2: VISION – lec\_1\_obj\_rec\_0.mpg

# Robotics

Demo 1: ROBOTICS – soccer.avi

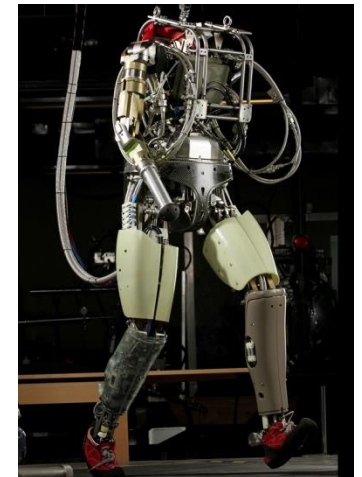
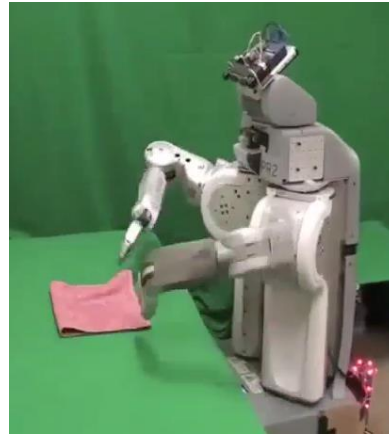
Demo 4: ROBOTICS – laundry.avi

Demo 2: ROBOTICS – soccer2.avi

Demo 5: ROBOTICS – petman.avi

Demo 3: ROBOTICS – gcar.avi

- Robotics
  - Part mech. eng.
  - Part AI
  - Reality much harder than simulations!
- Technologies
  - Vehicles
  - Rescue
  - Soccer!
  - Lots of automation...
- In this class:
  - We ignore mechanical aspects
  - Methods for planning
  - Methods for control



Images from UC Berkeley, Boston Dynamics, RoboCup, Google

# Game Playing

- **Classic Moment: May, '97: Deep Blue vs. Kasparov**
  - First match won against world champion
  - “Intelligent creative” play
  - 200 million board positions per second
  - Humans understood 99.9 of Deep Blue's moves
  - Can do about the same now with a PC cluster
- **Open question:**
  - How does human cognition deal with the search space explosion of chess?
  - Or: how can humans compete with computers at all??
- **1996: Kasparov Beats Deep Blue**

“I could feel --- I could smell --- a new kind of intelligence across the table.”
- **1997: Deep Blue Beats Kasparov**

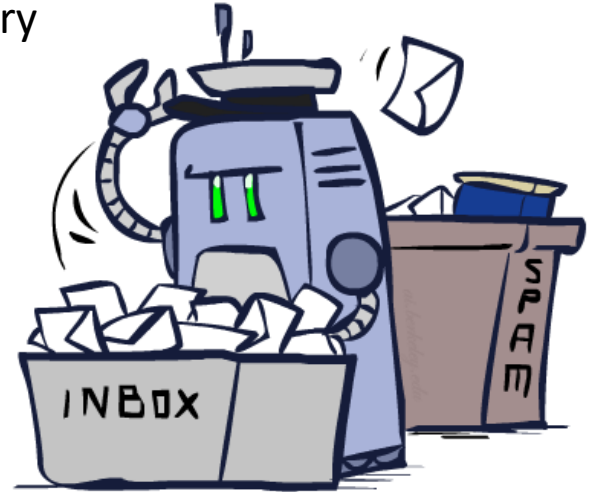
“Deep Blue hasn't proven anything.”
- **Huge game-playing advances recently, e.g. in Go!**



# Decision Making

- Applied AI involves many kinds of automation

- Scheduling, e.g. airline routing, military
- Route planning, e.g. Google maps
- Medical diagnosis
- Web search engines
- Spam classifiers
- Automated help desks
- Fraud detection
- Product recommendations
- ... Lots more!





# Modeling-inference-learning Paradigm

Paradigm

Modeling

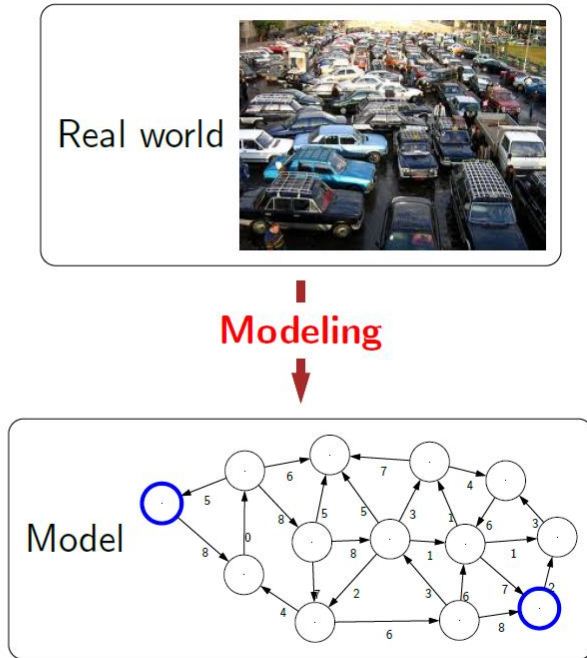
Inference

Learning

- The modeling-inference-learning paradigm is adopted to help us navigate the solution space.
- In reality, the lines are blurry, but this paradigm serves as an ideal and a useful guiding principle.

# Paradigm: modeling

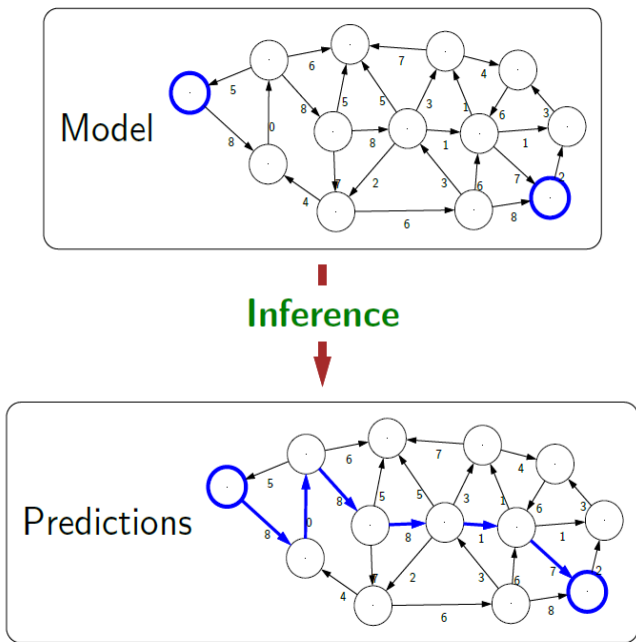
## Paradigm: modeling



- The first pillar is modeling. Modeling takes messy real world problems and packages them into neat **formal mathematical objects called models**, which can be subject to rigorous analysis but is more amenable to what computers can operate on. However, **modeling is lossy**: not all of the richness of the real world can be captured, and therefore there is an art of modeling: what does one keep versus what does one ignore? (An exception to this is games such as Chess or Go or Sudoku, where the real world is identical to the model.)
- **As an example**, suppose we're trying to have an **AI that can navigate through a busy city**. We might **formulate this as a graph** where nodes represent points in the city, edges represent the roads and cost of an edge represents trac on that road.

# Paradigm: inference

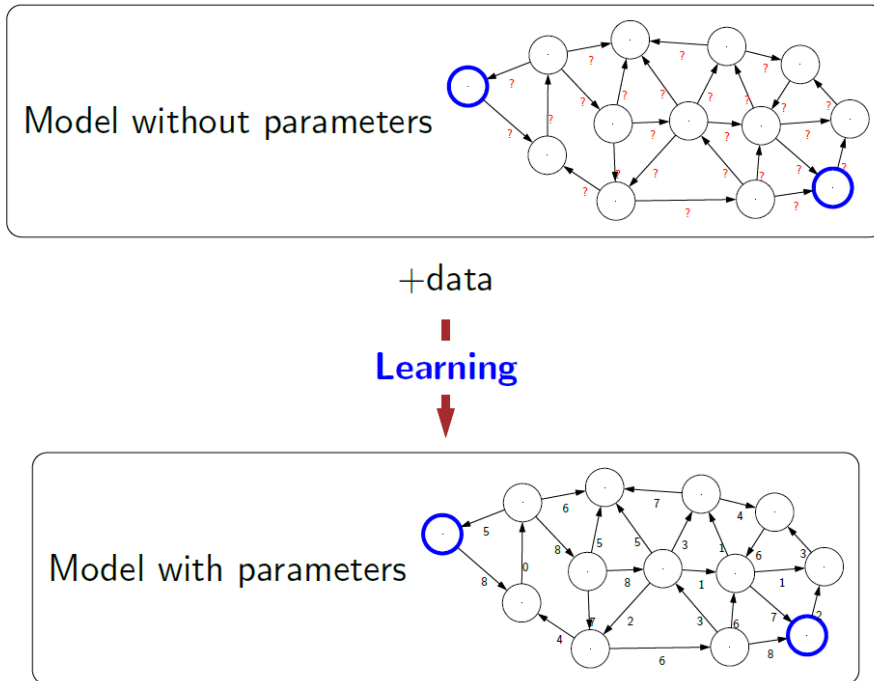
## Paradigm: inference



- The second pillar is **inference**. Given a model, the task of **inference is to answer questions with respect to the model**. For example, given the **model of the city**, one could ask questions such as: what is the **shortest path**? what is the **cheapest path**?
- For some models, **computational complexity** can be a concern (games such as Go), and usually approximations are needed.

# Paradigm: learning

## Paradigm: learning



- But where does the model come from? Remember that **the real world is rich**, so if the model is to be faithful, the model has to be rich as well. But **we can't possibly write down such a rich model manually**.
- The idea behind (machine) **learning is to instead get it from data**. Instead of constructing a model, **one constructs a skeleton of a model** (more precisely, a model family), which is a model **without parameters**. And then if we have the right type of data, we can run a machine learning algorithm to **tune the parameters of the model**.

# Tentative Course Plan

---

- As time permits, we plan to cover the following topics in this course:
  - Various search techniques to optimize the utility (including adversarial, and online settings)
  - Constraint satisfaction problems
  - Automated logical inference
  - Inference under uncertainty and Bayes nets
  - Temporal probability models (such as the Markov models)
  - Introduction to Machine Learning, Deep Learning, Reinforcement Learning
  - Introduction to Natural Language Processing, Deep Learning for Natural Language Processing
  - Introduction to Computer Vision, Robotics

# Table of Contents

Table of Contents for the US Edition (or see the [Global Edition](#))

[Preface \(pdf\)](#); [Contents with subsections](#)

## I Artificial Intelligence

- 1 Introduction ... 1
- 2 Intelligent Agents ... 36

## II Problem-solving

- 3 Solving Problems by Searching ... 63
- 4 Search in Complex Environments ... 110
- 5 Adversarial Search and Games ... 146
- 6 Constraint Satisfaction Problems ... 180

## III Knowledge, reasoning, and planning

- 7 Logical Agents ... 208
- 8 First-Order Logic ... 251
- 9 Inference in First-Order Logic ... 280
- 10 Knowledge Representation ... 314
- 11 Automated Planning ... 344

## IV Uncertain knowledge and reasoning

- 12 Quantifying Uncertainty ... 385
- 13 Probabilistic Reasoning ... 412
- 14 Probabilistic Reasoning over Time ... 461
- 15 Probabilistic Programming ... 500
- 16 Making Simple Decisions ... 528
- 17 Making Complex Decisions ... 562
- 18 Multiagent Decision Making ... 599

## V Machine Learning

- 19 Learning from Examples ... 651
- 20 Learning Probabilistic Models ... 721
- 21 Deep Learning ... 750
- 22 Reinforcement Learning ... 789

## VI Communicating, perceiving, and acting

- 23 Natural Language Processing ... 823
- 24 Deep Learning for Natural Language Processing ... 856
- 25 Computer Vision ... 881
- 26 Robotics ... 925

## VII Conclusions

- 27 Philosophy, Ethics, and Safety of AI ... 981
- 28 The Future of AI ... 1012

Appendix A: Mathematical Background ... 1023

Appendix B: Notes on Languages and Algorithms ... 1030

Bibliography ... 1033 ([pdf](#) and [bib data](#))

Index ... 1069 ([pdf](#))

[Exercises \(website\)](#)

[Figures \(pdf\)](#)

[Code \(website\)](#); [Pseudocode \(pdf\)](#)

Covers: [US](#), [Global](#)

